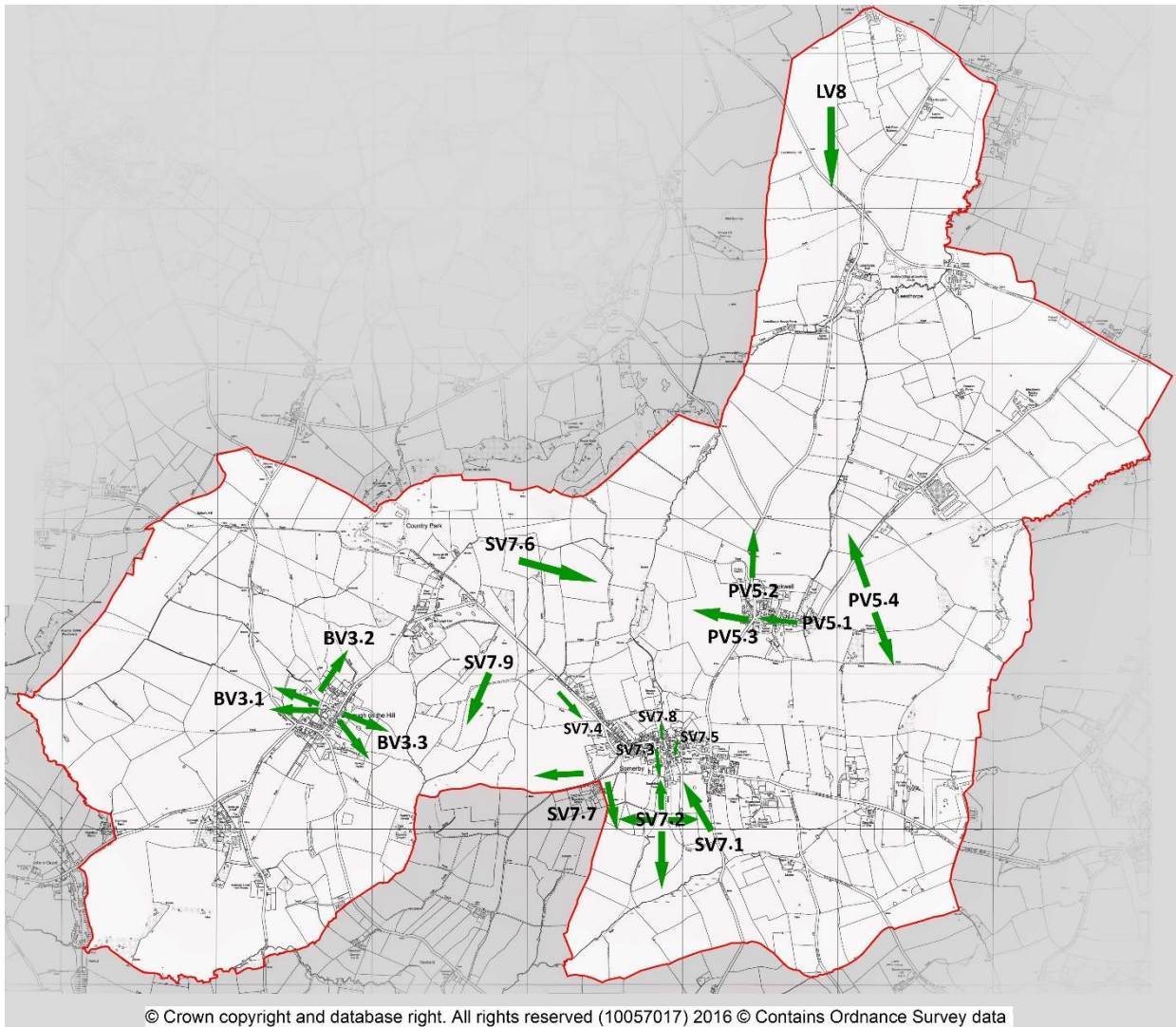


SOMERBY PARISH – IMPORTANT VIEWS

Expansive and long ranging views are a defining feature of the landscape of the Plan Area. The views described and illustrated below have been identified through consultation and field work to be important for their visual attractiveness and for the mix of natural and historic landscapes which they encompass. All are publicly accessible, and viewpoints are noted for each.

Somerby Parish – Important views



The individual views are described and photographed in the following sections of this appendix:

- 1.0 Somerby views (SV7.1 to SV7.9)
- 2.0 Burrough-on-the-Hill views (BV3.1 to BV3.3)
- 3.0 Pickwell views (PV5.1 to PV5.4)
- 4.0 Leesthorpe view (LV8)

1.0 Somerby views

Map reference SV7.1

View of the southern edge of the Somerby village conservation area across ridge and furrow fields and including disused water tower 'eye-catcher', Grade I All Saints Church tower and spire and Grade II Somerby House. The view is publicly accessible beginning at the rise of the Owston Road as the road approaches Somerby and from Footpath D74.



SV7.1 View northwest from Owston Rd towards Somerby

Map Reference SV7.2

A classic panoramic High Leicestershire view from the high ridge at the southern perimeter of Somerby which encompasses the conservation area, a tranquil pastoral landscape, ancient monuments and archaeological sites. Features include (a) Grade I All Saints Church, Grade II listed buildings such as Manor Farm House, Somerby School and others, earthworks of Somerby medieval village (HER:MLE: 22781), Grove Park and veteran trees and their settings.



SV7.2a View north back towards Somerby

Further south (b) the prospect opens out across small pastures, ridge and furrow fields, scattered arable and farmsteads, Owston hamlet and Owston Wood SSI and the Scheduled Ancient Monument of Whatborough Hill. Publicly accessible from several viewpoints including the public bridleway (marked on OS map), Leicestershire Round and Footpath D74. There is also a long view back towards the Somerby ridge across Owston Abbey fish ponds (SAM), Washdyke Road, Owston.



SV7.2b View south from Somerby

Map Reference SV7.3

View to open countryside and partial view of Grade II Manor Farmhouse publicly accessible from Somerby High Street and along the Manor Lane.



SV 7.3 View south along Manor lane to open countryside

Map Reference SV7.4

View of the historic Village Close bordered by a traditional assemblage of estate buildings at the north 'gateway' and entrance to Somerby conservation area. The view encompasses Grove Close, the expansive ironstone boundary wall of adjoining park land and trees behind, a row of out-buildings, including a Grade II glasshouse, Grove stables and landmark water tower and roof of the dwelling. Publicly accessible from the Burrough Road and Footpath D70 from where Somerby Grade I Church is also visible.



SV7.4 View south-east to northern edge of village conservation area

Map reference SV7.5

A traditional village view including a Grade II manor house, Grade I church, the village green and locally characteristic ironstone estate boundary wall publicly accessible at the southern entrance to Somerby High Street.



SV 7.5 Traditional view, west along Somerby High Street

Map reference SV7.6

Sweeping view towards Pickwell and Stygate Lane across woodlands, rolling fields and in the long view sections of Somerby Hall Park. Publicly accessible from Burrough Hill, the start of the Jubilee Way, Burrough Country Park.



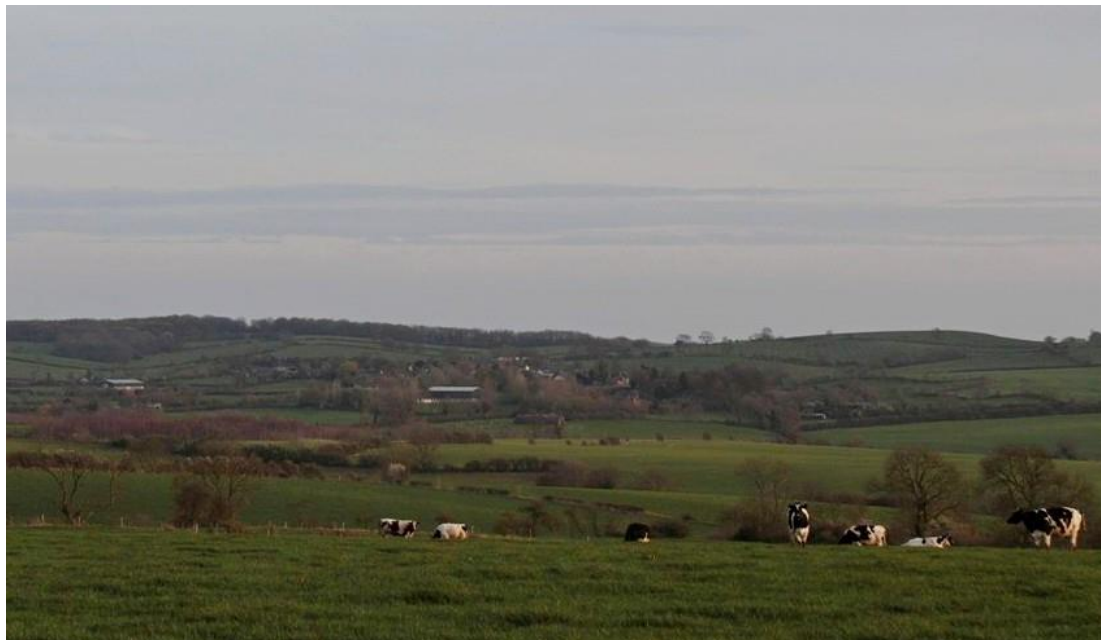
SV 7.6 Sweeping view east towards Pickwell

Map Reference SV7.7

Expansive view across grazing fields towards (a) Burrough village, Hall and park with the spire of Grade I St. Peter's Church spire, Tilton in the distance; and (b) south towards Owston. Publicly accessible from the Newbold Lane and Footpath D72.



SV7.7a View north-west to Burrough Hall from footpath D72



SV7.7b view south-east towards Owston from footpath D72

Map reference SV7.8

Views of Somerby Hall Park land, veteran trees, and pastoral fields from the north perimeter of Somerby village conservation area. Publicly accessible within Somerby village from porous spaces along the High Street, Mill Lane, the Leicestershire Round and Kathy's Pop-up Cafe, Rose Cottage, High Street.



SV 7.8 View north of Somerby Hall Parkland from High Street

Map Reference SV7.9

Sweeping vista across (a) open countryside including the geological landslip of the Burrough Hill escarpment and (b) old gravel pits, ridge and furrow fields and (south) the Somerby Grade 1 listed All Saints' Church. Publicly accessible from Footpath D70.



SV7.9a View south-west from Burrough escarpment across open countryside



SV7.9b View east across old gravel pits, ridge and furrow fields, towards All Saints Church, Somerby

2.0 Burrough-on-the Hill views

Map reference BV3.1

Sweeping view towards Charnwood Forest and the Wreake and Soar valleys from the escarpment at the west edge of Burrough-on-the-Hill village. Publicly accessible from the Twyford Road, Melton Lane and Footpath D70.



BV3.1 Sweeping view west towards Charnwood Forest

Map Reference BV3.2

(a) Panoramic view of Burrough village, historic landscapes and (b) Salters Hill and Burrough Hill Fort (SAM), The Limes and Cheseldyne house, both Grade II listed. Publicly accessible from Burrough Hill Fort ramparts, Kings Lane, Footpath D81 and bridleway D107 and D74a.



BV 3.2a View south-west of Burrough village from Burrough Hill Fort ramparts



BV 3.2b View north-east from Kings Lane, Burrough, to Burrough Hill Fort

Map Reference BV3.3

View across Burrough House park land towards Newbold hamlet and Tilton ridge.



BV3.3 View south-east towards Tilton Ridge

3.0 Pickwell views

Map Reference PV5.1

View east through the village Main Street to countryside encompassing the WWI Memorial green triangle, Grade I All Saints church yard, Grade II Pickwell Manor home farm buildings, vernacular dwellings and mixed deciduous and cherry tree plantation. Publicly accessible from Pickwell Main Street.



PV 5.1 View east along Main Street to countryside beyond village

Map Reference PV5.2

Long view across Pickwell Cricket Field towards Little Dalby encompassing arable and ridge and furrow fields and Kyte Hill amongst other natural features with Waltham wolds in the distance. Publicly accessible from the Leesthorpe Road and the Leicestershire Round.



PV5.2 View north-west towards Little Dalby from Pickwell cricket field

Map Reference PV5.3

View across Somerby Hall landscaped park land to Grade I All Saints Somerby Church and Somerby conservation area. Publicly accessible on Footpath D68, the Leicestershire Round and partially from above the hedge line along the Pickwell Road.



PV 5.3 View south-west across Somerby Hall parkland towards Somerby conservation area

Map Reference PV5.4

Expansive view of open skyscape, rolling pasture, wood and arable land from the high back-slopes of Pickwell village encompassing, Cold Overton, Whissendine windmill (Rutland). Publicly visible from Footpath D68, Bridleway D78 and a permitted footpath.



PV 5.4 View of rolling pastureland south-east towards Cold Overton from Pickwell back-slope

4.0 Leesthorpe View

Map Reference LV8

Panoramic view across Lower Leesthorpe dairy pasture, arable fields and Ash Pole Spinney towards the A606 and Leesthorpe. Publicly visible from Cuckoo Hill Lane and Ferneley's Dairy Barn Cafe, Whissendine Road.



LV8 View south across Lower Leesthorpe dairy pasture towards A606